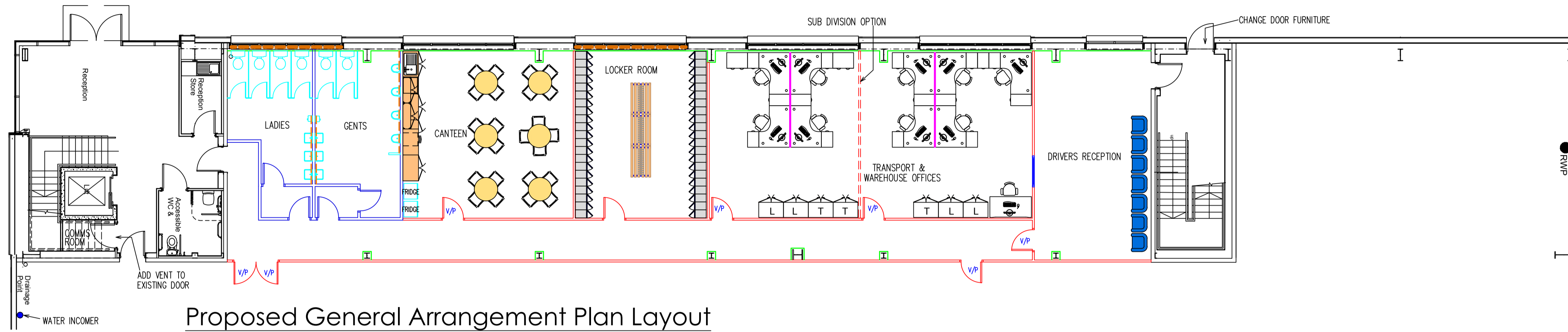


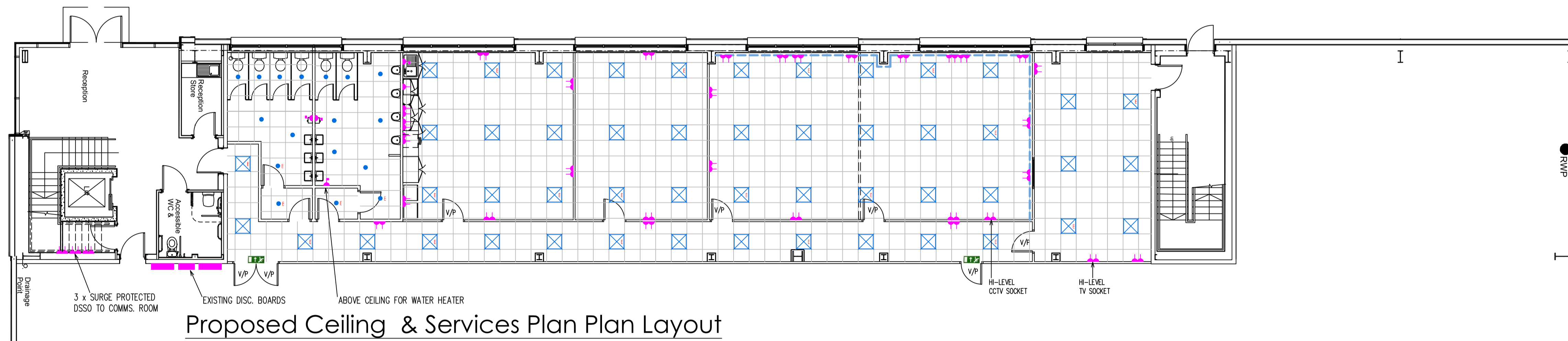
- GENERAL KEY:-**
- 75mm STUD & TRACK SOLID ELEVATION PARTITION
 - WINDOW HATCH (DRIVERS RECEPTION)
 - 100mm SOLID ELEVATION W.C. PARTITION
 - WALL CLADDING
 - EXTERNAL WINDOWS TO HAVE OPAQUE FILM APPLIED
 - V/P = DOOR VISION PANEL
 - 600mm x 600mm SUSPENDED CEILING
 - SPLASHBACK WALL TILES
 - T = TALL STORAGE CUPBOARD
 - L = LOW STORAGE CUPBOARD

- FLOORING KEY:-**
- VINYL FLOOR COVERING
 - CARPET TILES
 - BARRIER MATTING

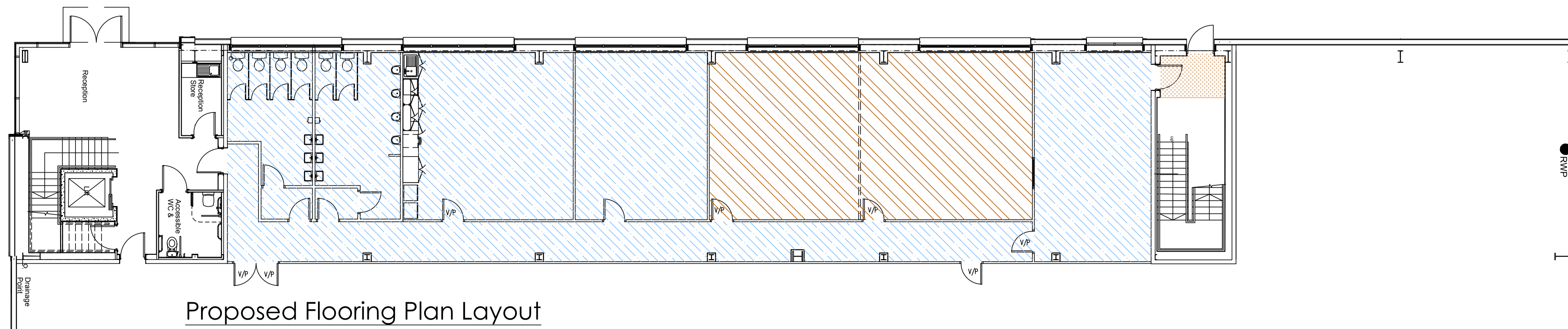
- SERVICES KEY:-**
- 600mm x 600mm RECESSED LED LIGHT UNIT
 - EMERGENCY 600mm x 600mm RECESSED LED LIGHT UNIT
 - DISC. RECESSED LIGHT
 - EMERGENCY DISC. RECESSED LIGHT
 - EMERGENCY "RUNNING MAN" BULKHEAD LIGHT ABOVE DOOR
 - 3 COMPARTMENT TRUNKING
 - DOUBLE SWITCH SOCKET OUTLET
 - APPLIANCE SOCKET OUTLET
 - SPUR



Proposed General Arrangement Plan Layout



Proposed Ceiling & Services Plan Plan Layout



Proposed Flooring Plan Layout

REVISION DATE

Project

 Stoke On Trent Warehouse
 Staff Welfare & Offices
 Requirements